

| Model | DF 43 | Volt/Hz | Date of Modification | Serial Number |
|-------------------------|--------------------------|----------------------------------|----------------------|---------------|
| Modified Article | | No serial numbrr cut in infotion | | |
| Reason for Modification | Parts catalog correction | | | |
| | | | | |
| | | | | |

The following should be corrected. Please correct your part catalog.

1. The following parts have been modified.

| Old Part Number | New Part Number | Description | Q'ty | Index No. | Page |
|-----------------|-----------------|-------------------------------|-------|-----------|------|
| A6281236 | A6281261 | Original Entrance Guide | 1 | 9 | 3 |
| A6282167 | A6281262 | Pad - Original Entrance Guide | 1 | 10 | 3 |
| A6281217 | A6281257 | Original Feed Belt | 1 | 18 | 5 |
| AA063144 | A6281596 | Left Transport Roller Spring | 4 | 38 | 5 |
| A6281582 | G0101106 | Rear Spring - Exit Roller | 2 → 0 | 23 | 7 |
| | | Spring - Interlock | 2 → 4 | 40 | 7 |
| A6281511 | A6281512 | Separation Roller | 1 | 5 | 7 |
| A6281572 | A6281566 | Rear Bushing - Exit Roller | 2 | 22 | 7 |
| A6281581 | A6281585 | Lower Exit Roller | 2 | 24 | 7 |
| A6281571 | A6281565 | Front Bushing - Exit Roller | 2 | 25 | 7 |

2. The following parts have been added.

| New Part Number | Description | Q'ty | Index No. | Page | Fig. no. |
|-----------------|---------------------------------------|------|-----------|------|----------|
| A6282170 | Lock Lever - Left Cover | 1 | 38 | 3 | 1 |
| A6281174 | Right Grounding Plate - Hinge Bracket | 2 | 39 | 3 | 1 |
| A6281177 | Left Grounding Plate - Hinge Bracket | 1 | 40 | 3 | 1 |
| 04504010B | Tapping Screw - MX10 | | 101 | 3 | 1 |
| A6281176 | Grounding Plate - Base | 1 | 42 | 9 | 2 |
| A6281829 | Collar - 9X15X3 | 1 | 43 | 9 | 2 |

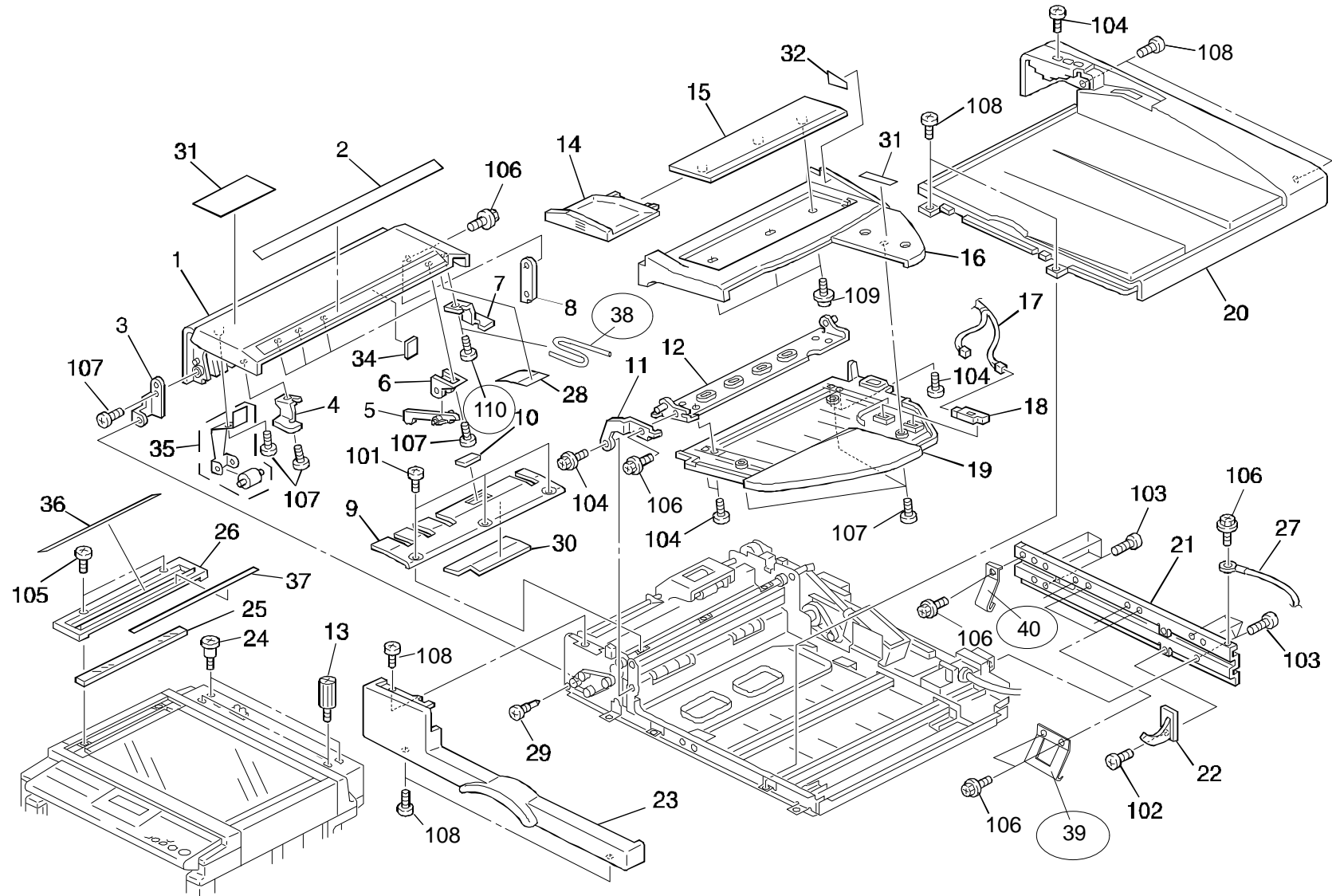


Fig. 1

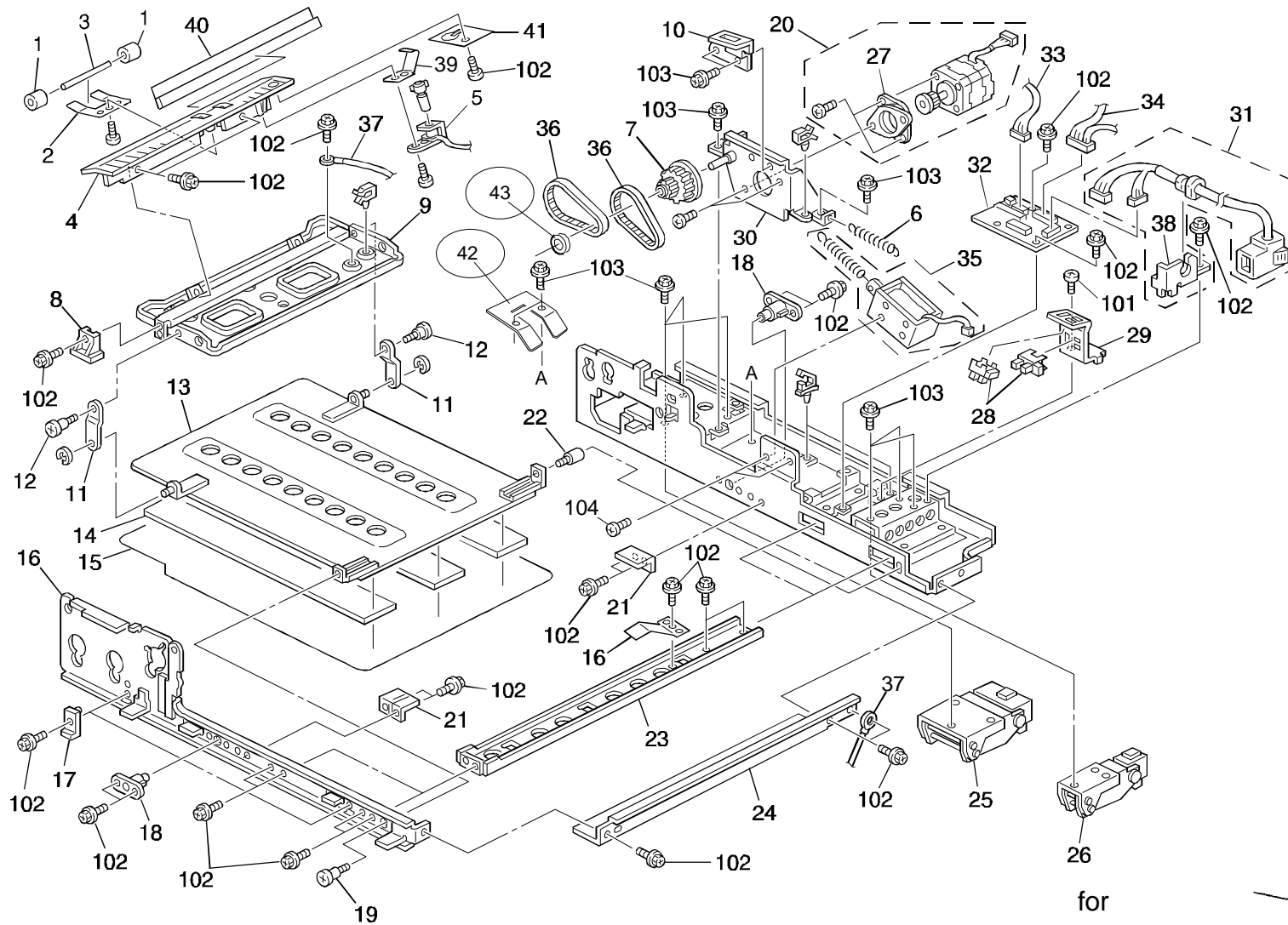


Fig. 2

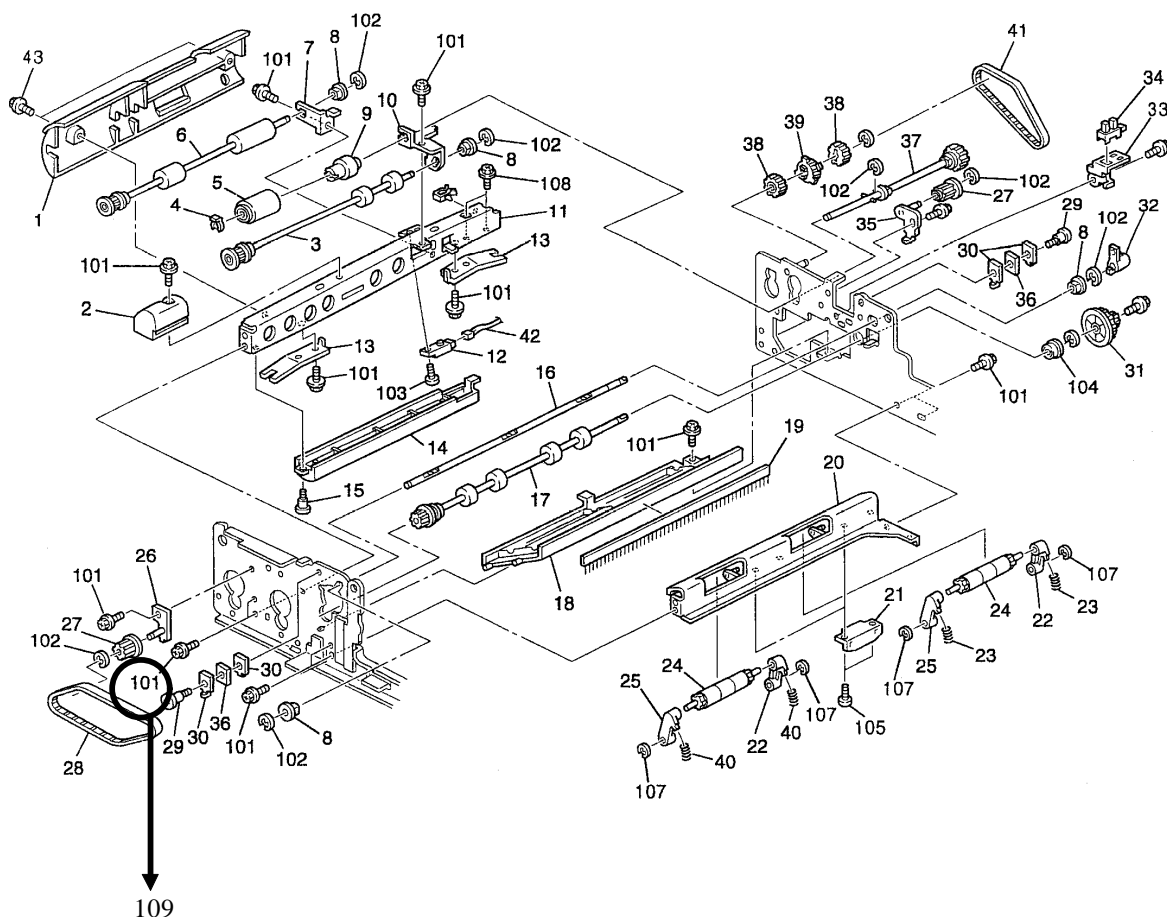
for

[Signature]
S. Fujii, General Manager
2nd.Field Information Dept. QAC

| | | | | |
|---------------------------------------|---|-----------------|------------------------|-----|
| Model: DF43 | | Date: 28-Feb-97 | No: 002 | 1/1 |
| Modified Article: Tapping Screw | | | Prepared by: K. Ugaeri | |
| From: QAC 2nd Field Information Dept. | | | Checked by: S. Fujii | |
| Reason for Modification: | <input type="checkbox"/> Parts catalog correction <input type="checkbox"/> Vendor change <input type="checkbox"/> To meet standards <input type="checkbox"/> To facilitate assembly <input type="checkbox"/> To improve reliability () <input checked="" type="checkbox"/> Other | | | |

The Pull Out Guide (index 1 - A628 1541) may be bent by coming in contact with the screws. The length of the screws has been changed from 6 mm to 5 mm

| Old part number | New part number | Description | Qty | Int | Page | Index | Note |
|-----------------|-----------------|------------------------|-------|-----|------|-------|------|
| 04513006B | | Tapping Screw - M3 x 6 | 4 - 0 | | 6 | 101 | |
| | 04513005B | Tapping Screw - M3 x 5 | 0 - 4 | | 6 | 109 | |
| | | | | | | | |



| | | | | | | |
|---------------------------------------|---|-----------------|---|-----|--|--|
| Model: DF43 | | Date: 28-Feb-97 | No: 003 | 1/1 | | |
| Modified Article: Decal | | | Prepared by: K. Ugaeri | | | |
| From: QAC 2nd Field Information Dept. | | | Checked by: S. Fujii | | | |
| Reason for Modification: | <input type="checkbox"/> Parts catalog correction | | <input type="checkbox"/> Vendor change | | <input type="checkbox"/> To meet standards | |
| | <input type="checkbox"/> To facilitate assembly | | <input type="checkbox"/> To improve reliability | | () | |
| | <input checked="" type="checkbox"/> Other | | | | | |

A decal has been newly added to advise the operator to clean the exposure glass when black stripes or black dots appear on the copied paper.

| Old part number | New part number | Description | Qty | Int | Page | Index | Note |
|-----------------|-----------------|-----------------------|-------|-----|------|-------|------|
| | A6286121 | Decal - Contact Glass | 0 - 1 | | | | |
| | | | | | | | |

* This decal has been put in the carton box.

If necessary, please put it on the cover of the DF.



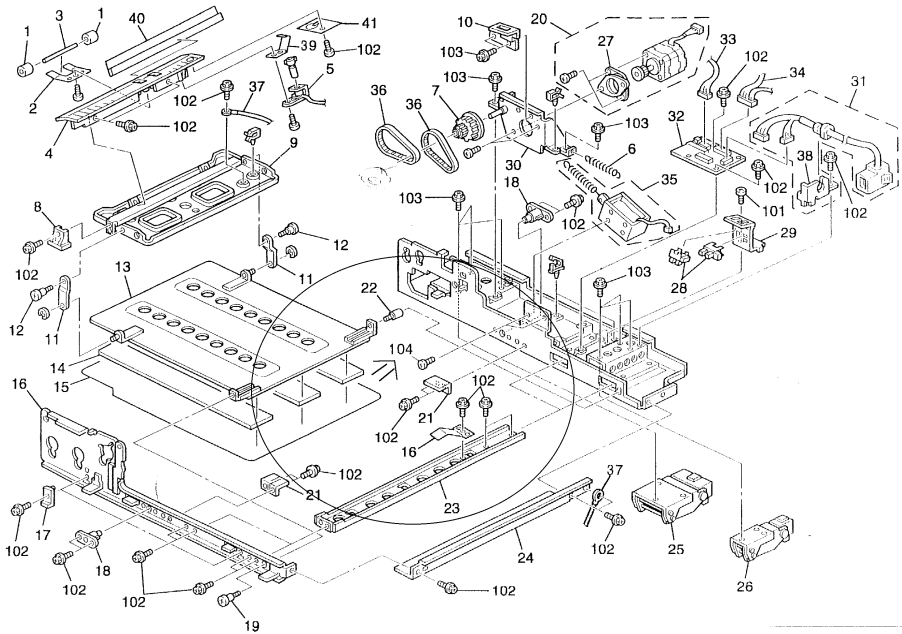
| | | | | |
|---------------------------------------|---|-----------------|------------------------|-----|
| Model: DF43 | | Date: 28-Feb-97 | No: 004 | 1/1 |
| Modified Article: Photosensor | | | Prepared by: K. Ugaeri | |
| From: QAC 2nd Field Information Dept. | | | Checked by: S. Fujii | |
| Reason for Modification: | <input type="checkbox"/> Parts catalog correction <input type="checkbox"/> Vendor change <input type="checkbox"/> To meet standards <input type="checkbox"/> To facilitate assembly <input checked="" type="checkbox"/> To improve reliability () <input type="checkbox"/> Other | | | |

The photosensor will be changed from the short-range type (up to 10 mm) to a long-range type (up to 20 mm) to prevent the document sensor from not detecting an original. The problem may happen if the original is bent further away from the sensors.

| Old part number | New part number | Description | Qty | Int | Page | Index | Note |
|-----------------|-----------------|------------------------------|-------|-----|------|-------|------|
| AW010066 | AW010074 | Photosensor - PS - R50D1 - B | 2 - 2 | | 2 | 18 | |
| | | | | | | | |

| | | | |
|--|---|-----------------------|-------|
| Model: DF43 | | Date: 19-Mar-97 | No: 5 |
| Modified Article: Philips Pan Head Screw | | Prepared by: K.Ugaeri | |
| From: QAC 2nd Field Information Dept. | | Checked by: S. Fujii | |
| Reason for Modification: | <div><input checked="" type="checkbox"/> Parts catalog correction</div> <div><input type="checkbox"/> Vendor change</div> <div><input type="checkbox"/> To meet standards</div> <div><input type="checkbox"/> To facilitate assembly</div> <div><input type="checkbox"/> To improve reliability</div> <div>()</div> <div><input type="checkbox"/> Part Standardization</div> <div><input type="checkbox"/> Other</div> | | |

| Old part number | New part number | Description | Qty | Int | Page | Index | Note |
|-----------------|-----------------|-------------------------------|-----|-----|------|-------|------|
| 03130040 | A5902214 | Philips Pan Head Screw - M3x4 | 2-2 | | 9 | 104 | |
| | | | | | | | |



| | | | |
|---------------------------------------|---|-----------------------|-------|
| Model: DF43 | | Date: 19-Mar-97 | No: 6 |
| Modified Article: Slider Guide Screw | | Prepared by: K.Ugaeri | |
| From: QAC 2nd Field Information Dept. | | Checked by: S. Fujii | |
| Reason for Modification: | <input type="checkbox"/> Parts catalog correction <input type="checkbox"/> Vendor change <input type="checkbox"/> To meet standards <input type="checkbox"/> To facilitate assembly <input type="checkbox"/> To improve reliability () <input type="checkbox"/> Part Standardization <input checked="" type="checkbox"/> Other | | |

To prevent the original holder bracket (A6281613) from removing, the length of the slider guide screw has been changed from 6 mm to 16 mm from March production '97.

| Old part number | New part number | Description | Qty | Int | Page | Index | Note |
|-----------------|-----------------|--------------------|-----|-----|------|-------|------|
| A4992389 | AA143347 | Slider Guide Screw | 1-1 | | 9 | 22 | |
| | | | | | | | |

| | | | |
|---|--|-----------------------|-------|
| Model: DF43 | | Date: 15-Apr-98 | No: 7 |
| Modified Article: Decal-Original Scale (A4) | | Prepared by: K.Ugaeri | |
| From: QAC Field Information Dept. | | | |
| Reason for Modification: | <input checked="" type="checkbox"/> Parts catalog correction <input type="checkbox"/> Vendor change <input type="checkbox"/> To meet standards <input type="checkbox"/> To facilitate assembly <input type="checkbox"/> To improve reliability () <input type="checkbox"/> Part standardization <input type="checkbox"/> Other | | |

The following part is missing. Please correct your part catalog.

| Old part number | New part number | Description | Qty | Int | Page | Index |
|-----------------|-----------------|-----------------------------|-----|-----|------|-------|
| | A6286011 | Decal – Original Scale (A4) | | | 3 | 37 |

* Current part number A6286061 is a decal for LT size.